

# TECHNICAL & ESD FURNITURE ANTISTATIC EQUIPMENT



**VIKING VKG TOOLS**

2013-2014



# TECHNICAL & ESD FURNITURE

## ANTISTATIC EQUIPMENT

### Table of contents

<b>About us</b>	3
<b>VIKING technical furniture Configurator</b>	4
<b>3D Workspace Planner</b>	5
<b>VIKING workplaces series</b>	6
Alpha workbenches	8
Alliance workbenches	10
Classic workbenches	12
Comfort workbenches	14
Constant workbenches	16
Ostrov workbenches	18
Ordering information	20
Verstak heavy duty workbenches	22
<b>Always in stock</b>	24
Universal workbenches	25
<b>Customized layouts</b>	25
<b>Workplaces additional equipment</b>	26
<b>Drawer units</b>	30
Movable and suspended drawer units	30
Stationary cabinets and drawer units	31
Enlarged stationary drawer units	32
ALF-TMB cabinet	33
<b>Movable tables and carts</b>	34
<b>Movable trolleys</b>	36
<b>Cabinets and wardrobes</b>	38
<b>Shelvings</b>	40
<b>ESD chairs</b>	41
<b>Test and measurement equipment</b>	43
<b>ESD garments</b>	44
<b>Our customers</b>	46



# TECHNICAL&ESD FURNITURE ANTISTATIC EQUIPMENT



Viking technical furniture. VKG tools. ESD equipment.



## About us

By 2012 DIPPAUL Company have accumulated 20 years of significant experience in electronics and semiconductor industries market, offering solutions, technologies and equipment. In the course of these years some major companies from military-industrial and aerospace sectors, contract manufacturers, research and educational organizations, service and repair providers, telecommunication operators and other enterprises have become our clients. Dipaul Company has implemented dozens of equipping projects for such Russian companies as Transneft, Gazprom, Rosenergoatom, Russian Space Systems and international companies like Samsung Electronics, LG Electronics, Volkswagen Group, Nissan Manufacturing, Elcoteq, TPV Technology, Foxconn.

Understanding all our clients' needs and requirements, we started manufacturing workplaces for electronics devices assembly under VIKING brand. Viking manufacturing site is located near Saint-Petersburg and occupies the territory of over 6.000 square meters. In metal cutting area, painting zone and woodshops antistatic and technical furniture is produced, then processed in assembling and packing sections and stored in a spacious warehouse.

We constantly monitor manufacturing process and quality of our workbenches on all stages, which is acknowledged by ISO 9001:2008 certificate. For antistatic furniture, strict compliance with IEC 61340 is guaranteed.

In 2013 DIPPAUL Company has opened its branch office and a central distribution warehouse in Prague (Czech Republic) to provide a close support to its partners in the European region.

## VIKING technical furniture

Today VIKING brand offers a wide range of different workplaces, technical and ESD furniture and antistatic equipment.

We designed and produce VIKING furniture as reliable, durable, ergonomic and easy to assemble products. In the past 10 years we have furnished thousands of Russian industrial enterprises, since 2007 we also sell our products to European electronics and semiconductor industry companies from Germany, the Netherlands, France, Finland, Hungary, Czech Republic and others.

VIKING technical furniture provides ergonomic working area for any company and is distinguished by:

- Wide range of functional, convertible and interchangeable modules for each particular employee;
- Adjustment, layout and customization according to clients' specific needs;
- Possibility of modernization and refitting after the purchase;
- Strict compliance with the international antistatic standard IEC 61340.

VIKING technical furniture product range includes workbenches, drawer units, equipment trolleys, carts and shelving, storage and wardrobe cabinets, ESD chairs and other ESD equipment and accessories.

The furniture is produced in antistatic (ESD-protected) and technical versions.

## VIKING ESD furniture

Antistatic (ESD) safety is one of the modern requirements for companies working in a field of electronic devices manufacturing, processing and repair. One of the crucial elements of this safety is antistatic furniture in particular and workplaces protection in general. We were the first in Russia to develop new technologies and use new materials to manufacture antistatic furniture, which complies with international IEC 61340. By now, VIKING ESD products have practically become a standard for Russian radio electronics companies.

## VKG tools ESD equipment

Besides a broad line of furniture, we offer a wide range of antistatic products and consumables to fully equip ESD-protected areas. Among them, one can find garments, storage and transportation means, monitoring and audit devices. These products are sold under VKG TOOLS brand.

www.viking-esd.com



# TECHNICAL&ESD FURNITURE ANTISTATIC EQUIPMENT

## VIKING technical furniture Configurator

All VIKING technical and ESD workbenches consist of functional interchangeable modules to provide maximum flexibility and help our customers to create customized workplaces, which satisfy any of their specific needs. Sometimes it becomes an uneasy process to create a combination and make a right choice according to modules description or codes. With our new online service – **VIKING technical furniture Configurator** (<http://www.viking-esd.com/configurator>), customers are able to avoid these difficulties and make their choice quickly.



VIKING technical furniture Configurator helps to choose only necessary basic modules and additional equipment of a future workplace online. It simplifies the process of assembling a workbench set, saves time and helps to avoid possible mistakes in different modules compatibility.

After choosing required options and elements one can print the individual set and use the picture and the list of modules for future orders.

VIKING technical furniture Configurator is also useful for workplaces amendment. Any time after the purchase customer can add or change workplaces' modules so that workplaces are able to meet new requirement of the production process or changed conditions.

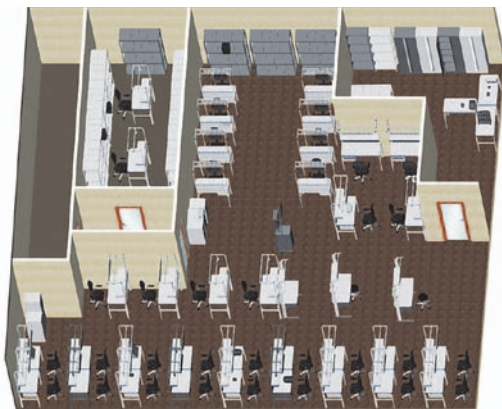


<http://www.viking-esd.com/configurator>



## 3D Workspace Planner

The 3D Workspace Planner software is used for manufacturing space planning, design and visualization; it provides the possibility of trying on several options of the entire production space equipped with VIKING products. By using the online version of 3D workspace planner software, our customers get photorealistic 3D images of what the exact workspace will look like and a list of chosen equipment.



While being on the stage of planning new manufacturing facilities, workspace repairing or reequipping it's very useful to have the ability to compare different types of furniture and equipment layouts. Using the very exact hall dimensions our client can build up a 3D plan of the hall, estimate the quantity of necessary technical furniture and their disposition, arrange workplaces, passageways and utility premises. Our 3D workspace planner allows to specify windows, doors, columns sizes and positions, and also to choose colors and shapes of additional elements.

As a result of working in 3D workspace planner, a user gets visual plans of re-equipped halls in isometric, top and 3d front view and detailed list of chosen furniture and equipment. All hall plans are transferred to standard .jpg format images which are easy to be sent, viewed and printed.



<http://www.viking-esd.com>

www.viking-esd.com



# TECHNICAL & ESD FURNITURE ANTISTATIC EQUIPMENT

## VIKING workplaces series

ALPHA



ALLIANCE



CLASSIC



COMFORT



CONSTANT



OSTROV



VERSTAK



UNIVERSAL



CUSTOMIZED WORKBENCH



www.viking-esd.com



# TECHNICAL & ESD FURNITURE ANTISTATIC EQUIPMENT



## VIKING workplaces series

VIKING products are available in technical (non antistatic) and ESD (antistatic) versions, the latter are marked with ESD label.

Steel frames are powder-coated in dark grey (RAL 7012) or light grey (RAL 7035) color, tabletops are resistant to erasure. VIKING workbenches are modular, which allow customers to order only necessary parts and get workplaces for any specific use.

Sets of furniture can be supplemented by additional equipment at any time after the purchase. Assembly and installation is quick and simple, clear assembly instructions are provided with each module. Worktops and shelves are designed to endure big loads. Rigid and robust construction of VIKING workbenches provides reliable usage and thought-out ergonomics – for comfortable work. VIKING ESD-protected products are compliant with IEC 61340 standard and all the necessary certificates and test reports.

VIKING technical furniture products range consists of a wide line of functional, convertible and interchangeable modules for each particular enterprise. To facilitate configuration and simplify different elements choosing, our customers are welcomed to use CONFIGURATOR (<http://www.viking-esd.com/configurator>), our new online service which helps to interactively select all necessary workbench parts. After choosing required options and elements one can print the individual set and use the picture and the list of modules for future orders.

We divide our workbenches and supplementary elements in several series; each has its own peculiarities:

- **ALPHA** series workbenches are designed as an extension of Alliance series product line. Alpha series workbenches allow effective use of space, offer practical structures and a compact size.
- **ALLIANCE** workbenches are distinguished by elegant design, advanced ergonomics and convenient system of height adjustment. They can be placed in an inseparable line where each two tabletops are held by lateral frames and share those in the middle.
- **CLASSIC** workplaces are simple, functional and inexpensive. They can be placed in a line with no gaps for conveyor work.
- **COMFORT** workbenches that look more appealing and offer advanced ergonomics for comfortable work.
- **CONSTANT** workbenches (with unregulated worktop height) that are equipped with functional supports and can withstand increased load.
- **OSTROV** workbenches that are mirror-like, designed for the most effective use of workspace.
- **VERSTAK** heavy duty workbenches available only in non-antistatic version, but their rigidity and different tabletop and supports types will be useful for manufacturing process.
- **UNIVERSAL** workbenches, the simple and cheapest ones, they do not allow any extension.

**In addition, we can always manufacture customized products and are confident of our ability to satisfy and meet our customer's individual requirements.**



www.viking-esd.com



# TECHNICAL & ESD FURNITURE

## ANTISTATIC EQUIPMENT

### ALPHA series workbenches

www.viking-esd.com



1



2



## ALPHA series workbenches

Alpha series workbenches are designed as an extension of Alliance series product line. Stylish and ergonomic workbenches for unspecified technical premises can be used for offices and engineering staff and inside educational facilities. Alpha series workbenches allow effective use of space, offer practical structures and a compact size.

Alpha series workbenches are manufactured in 2 versions: single workbench and mirror-located double workbench

Code	Dimensions
ALF-15	1500x700 mm
ALF-18	1800x700 mm
ALF-O-15	2* (1500x700) mm
ALF-O-18	2* (1800x700) mm

### 1 ALF Single workbench

This comfortable workbench is perfect for those work processes which do not require any additional technical equipment. It is recommended for office and engineering personnel, also used for training and educational premises. Workbench is supplied with 480 mm height acoustic screen covered with grey textile.

Workplace height: 1285 mm; tabletop height: 800 mm

### 2 ALF-O Double workbench

Double workbench with 2 mirror located tabletops, helps to save space and reduce costs. Workbench is supplied with 480 mm height acoustic screen covered with grey textile.

Workplace height: 1285 mm; tabletop height: 800 mm

### 3 ALF-EPA Power panel

Basic configuration consists of 4 sockets in an aluminium case with protective contact and 3 m cable. Power panel can be mounted either on or below tabletop by the same hardware. Can be equipped with additional sockets, fuses, phone jacks and earth leakage circuit breakers.

Nominal load capacity: 10 A

### 4 TP-01/P, TP-02/P Optional drawer units

Storage solution for tools and components, no place on floor required.

- TP-01/P: 490 x 354 x 580 mm
- TP-02/P: 490 x 233 x 580 mm

### 5 ALF-TMB cabinet

Spacious metal cabinet for documents, folders and personal belongings; can be attached to a workbench by bolts. Inner section equipped with casters and slides in and out for 650 mm. Cabinet's inner section has 3 shelves; each has a perforated side wall, which can be placed on right or left side depending on further usage.

Dimensions: 1285 x 445 x 700 mm

Distributed load capacity of each shelf: 30 kg

### Additional equipment for ALF-TMB cabinet: shelves dividers

#### D-7/ALF Horizontal dividers

7 horizontal 335 mm length dividers help to organize cells for different small items.

#### D-4/ALF Vertical dividers

4 vertical 240 x 290 mm dividers help to organize slots for folders and documents.

See more on p. 33



# TECHNICAL & ESD FURNITURE

## ANTISTATIC EQUIPMENT

### ALLIANCE series workbenches



1

2



### ALLIANCE series workbenches

Alliance workbenches are distinguished by elegant design, advanced ergonomics and convenient system of height adjustment. Due to possibility of broadened worktop, main shelf and lighting height adjustments, these workbenches are very comfortable to work at, even in the upright position. One can quickly make any adjustments by his own and fix working surfaces by key wrenches.

Several Alliance workbenches can be placed in an inseparable line where two tabletops are held by side lateral frames and share those in the middle.

Possible tabletop height adjustment: 200 – 1300 mm.

Possible lighting height adjustment: 1200 – 2000 mm.

Tabletop load capacity: 200 kg

Main shelf load capacity: 100 kg.

Alliance series workbenches are supplied in a set with perforated panel, main shelf and lighting.

They allow the following extensions:

#### 1 AL Alliance set

Single workbench with two lateral aluminium frames. The workbench is supplied in a set with perforated panels, main shelf and lighting.

Load capacity: 200 kg

#### 2 AL/D Alliance additional set

Additional set with one lateral aluminium frame is meant to be attached to main Alliance workbench from either side, which provides inseparable working surface line.

The set includes: workbench with one lateral frame, perforated panels, main shelf and lighting.

Load capacity: 200 kg

#### 3 AL-PO Additional shelf

Additional shelf for Alliance series workbenches.

- Load capacity: 100 kg
- Height adjustment: 200 – 850 mm.

#### 4 AL-RK Bin rail

Aluminum rail for bin storage placed along workbench length.

- Load capacity: 10 kg

#### 5 AL-EP Power panel

Basic configuration consists of 4 sockets placed in aluminium case with protective contact and 3 m cable. Panel can be equipped with additional sockets, earth leakage circuit breaker, automatic fuse and a phone jack.

- Nominal load capacity: 10 A
- Grounding cord cross-section: 0.75 mm

#### 6 TP-01/P, TP-02/P Optional drawer units

Storage solution for tools and components, no place on floor required.

Dimensions:

- TP-01/P: 490 x 354 x 580 mm
- TP-02/P: 490 x 233 x 580 mm

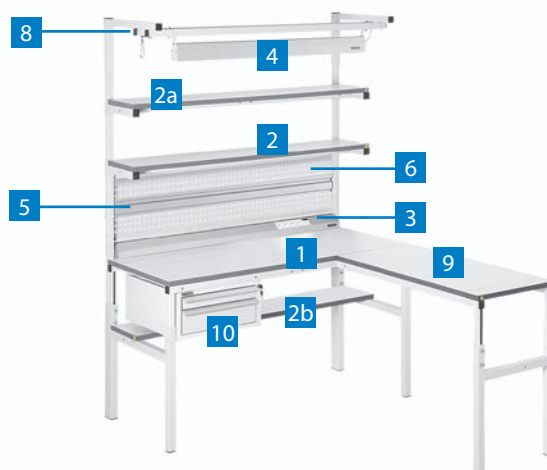
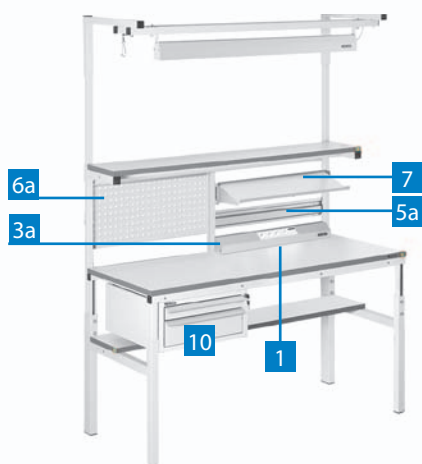
Code	Dimensions
AL-12	1200x700 mm
AL-15	1500x700 mm
AL-18	1800x700 mm



# TECHNICAL & ESD FURNITURE ANTISTATIC EQUIPMENT

## CLASSIC series workbenches

www.viking-esd.com



### CLASSIC series workbenches

#### 1 SR Workbench

These workbenches can be placed in a line to make a common working area with no gaps. Universal design allows fitting out the workplace with additional equipment and drawer units.

- Height adjustment: 650 - 950 mm
- Load capacity: 300 kg
- Temperature resistance: 300 °C

#### 2 PO Main shelf

Rear racks included.

- Height adjustment: 85 - 900 mm
- Load capacity: 50 kg

#### 2a PO/1 Additional shelf

Requires PO Main shelf to be installed.

- Height adjustment: 200 - 800 mm
- Load capacity: 50 kg

#### 2b PO/2 Underneath shelf

Not compatible with TP-01/P Optional drawer unit.

- Load capacity: 100 kg

#### 3 EP Power panel

#### 3a ½ EP Power panel

Basic configuration consists of 4 sockets placed in aluminium case with protective contact and 3 m cable.

Panel can be equipped with additional sockets, earth leakage circuit breaker, automatic fuse and a phone jack.

- Nominal load capacity: 10 A
- Grounding cord cross-section: 0.75 mm

#### 4 DL/A Workbench lighting

DL/A Workbench lighting is placed in an aluminum case with 2 energy-efficient luminescent 54 W lamps, light direction regulation and shadowless reflector provided. Quick switching on without shimmering, no strobing freeze.

- Length: 1200 mm
- Height adjustment: 500 - 1350 mm
- Illuminance at 1000 mm distance:
  - 1200 lux central
  - 800 lux peripheral

#### 5 RK Bin rail

#### 5a ½ RK Bin rail

Aluminum rail for bin storage placed along workbench length.

- Load capacity: 10 kg

#### 6 PFP Perforated panel

#### 6a ½ PFP Perforated panel

Panel can be equipped by different holders for additional equipment and tools storage.

#### 7 PN Sloped shelf

Angle adjustment provides comfort monitoring of working equipment.

- Load capacity: 50 kg

#### 8 IP Cantilever

It was designed for easy-to-reach attaching of drawings, lighting and instruments.

IP Cantilever can be additionally equipped by retracing KL-1200 mechanism.

#### 9 US-1 Corner workbench

Dimensions: 1200x500 mm

#### 10 TP-01/P, TP-02/P Optional drawer units

Storage solution for tools and components, no place on floor required.

Dimensions:

- TP-01/P: 490x354x580 mm
- TP-02/P: 490x233x580 mm

**See also: Ordering information.**

**When ordering, please, mention whether ESD or technical version, and whether dark grey RAL 7012 or light grey RAL 7035 color required.**

**Individual requirements and customized layouts are welcomed.**



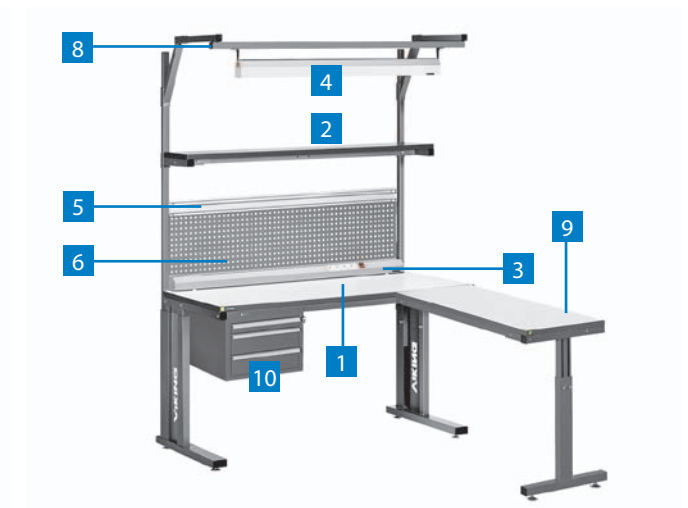
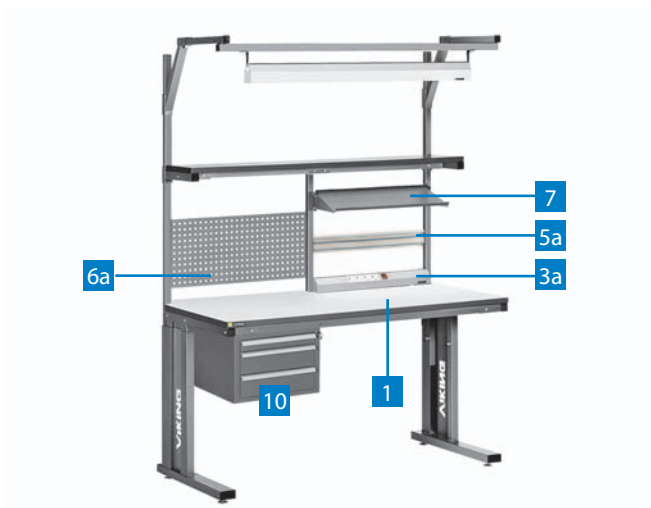




# TECHNICAL & ESD FURNITURE ANTISTATIC EQUIPMENT

## COMFORT series workbenches

www.viking-esd.com



### COMFORT series workbenches

#### 1 SR COMFORT Workbench

These workbenches offer advanced ergonomic characteristics.

- Height adjustment: 800 - 950 mm
- Load capacity: 200 kg
- Heat resistance: 300 °C

Code	Dimensions
SR-12 Comfort	1200x700 mm
SR-15 Comfort	1500x700 mm
SR-18 Comfort	1800x700 mm

#### 2 PO Main shelf

Rear racks included.

- Height adjustment: 85 - 900 mm
- Load capacity: 50 kg

#### 3 EP Power panel

#### 3a ½ EP Power panel

Basic configuration consists of 4 sockets placed in aluminium case with protective contact and 3 m cable.

Panel can be equipped with additional sockets, earth leakage circuit breaker, automatic fuse and a phone jack.

- Nominal load capacity: 10 A
- Grounding cord cross-section: 0.75 mm

#### 4 DL/A COMFORT Workbench lighting

DL/A Comfort Workbench lighting is placed in an aluminum case with 2 energy-efficient luminescent 54 W lamps, light direction regulation and shadowless reflector provided. Quick switching on without shimmering, no strobe effect.

- Length: 1200 mm
- Height adjustment: 500 - 1350 mm
- Illuminance at 1000 mm distance:
  - 1200 lux central
  - 800 lux peripheral

#### 5 RK Bin rail

#### 5a ½ RK Bin rail

Aluminum rail for bin storage placed along workbench length.

- Load capacity: 10 kg

#### 6 PFP Perforated panel

#### 6a ½ PFP Perforated panel

Panel can be equipped by different holders for additional equipment and tools storage.

#### 7 PN Sloped shelf

Angle adjustment provides comfort monitoring of working equipment.

- Load capacity: 50 kg

#### 8 IP Cantilever

It was designed for easy-to-reach attaching of drawings, lighting and instruments.

IP Cantilever can be additionally equipped by retracing KL-1200 mechanism.

#### 9 US-1 COMFORT Corner workbench

Dimensions: 1200x500 mm.

#### 10 TP-01/P, TP-02/P Optional drawer units

Storage solution for tools and components, no place on floor required.

Dimensions:

- TP-01/P: 490x354x580 mm
- TP-02/P: 490x233x580 mm

See also: Ordering information.

When ordering, please, mention whether ESD or technical version, and whether dark grey RAL 7012 or light grey RAL 7035 color required.

Individual requirements and customized layouts are welcomed.

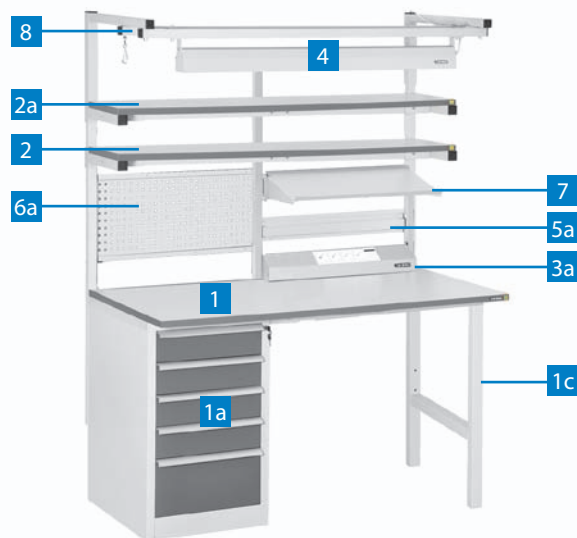




# TECHNICAL & ESD FURNITURE ANTISTATIC EQUIPMENT

## CONSTANT series workbenches

www.viking-esd.com





### CONSTANT series workbenches

#### 1 SR CONSTANT Workbenches

These workbenches can not be height-adjusted.

- Tabletop height: 825 mm
- Load capacity: 300 kg

As a support, Constant workbenches can have:

- 1a** Cabinet unit with 5 drawers on telescopic runners and a lock
- 1b** Cabinet with 2 shelves and a lock
- 1c** Legs

In any combination, except for 1200 mm workbenches that must have legs as one support.

New stationary cabinet (TMB-02) and drawer unit (DR-03/1) can be installed as a worktop support upon request (see more on p. 23)

Code	Dimensions
SR-12+drawer SR-12+cabinet	1200x700 mm
SR-15+drawer SR-15+cabinet SR-15+drawer+cabinet SR-15+cabinet+cabinet SR-15+drawer+drawer	1500x700 mm
SR-18+drawer SR-18+cabinet SR-18+drawer+cabinet SR-18+cabinet+cabinet SR-18+drawer+drawer	1800x700 mm

#### 2 PO Main shelf

Rear racks included.

- Height adjustment: 100 - 850 mm
- Load capacity: 50 kg

#### 2a PO/1 Additional shelf

Requires PO Main shelf to be installed.

- Height adjustment: 200 - 850 mm
- Load capacity: 50 kg

#### 3 EP Power panel

#### 3a ½ EP Power panel

Basic configuration consists of 4 sockets placed in an aluminium case with protective contact and 3 m cable. Panel can be equipped with additional sockets, earth leakage circuit breaker, automatic fuse and a phone jack.

- Nominal load capacity: 10 A
- Grounding cord cross-section: 0.75 mm

#### 4 DL/A Overlight

DL/A Workbench lighting is placed in an aluminum case with 2 energy-efficient luminescent 54 W lamps, light direction regulation and shadowless reflector provided. Quick switching on without shimmering, no strobe effect.

- Length: 1200 mm
- Height adjustment: 500 - 1350 mm
- Illuminance at 1000 mm distance: 1200 lux central and 800 lux peripheral

#### 5 RK Bin rail

#### 5a ½ RK Bin rail

Aluminum rail for bin storage placed along workbench length.

- Load capacity: 10 kg

#### 6 PFP Perforated panel

#### 6a ½ PFP Perforated panel

The panel can be equipped by different holders for additional equipment and tools storage.

#### 7 PN Sloped shelf

Angle adjustment provides comfort monitoring of working equipment.

Load capacity: 50 kg

#### 8 IP Cantilever

Cantilever is designed for easy-to-reach attaching of drawings, lighting and instruments. Cantilever can be additionally equipped by retracing KL-1200 mechanism.

**See also: Ordering information.**

**When ordering, please, mention whether ESD or technical version, and whether dark grey RAL 7012 or light grey RAL 7035 color required.**

**Individual requirements and customized layouts are welcomed.**





# TECHNICAL & ESD FURNITURE ANTISTATIC EQUIPMENT

## OSTROV series workbenches



www.viking-esd.com

### OSTROV series workbenches

#### 1 SO Workbench

Two mirror-like situated workbenches allow effective use of space. Basic configuration includes 300 mm shelves for each workplace

- Height adjustment: 655 - 950 mm
- Load capacity: 300 kg
- Temperature resistance: 300 °C

Code	Dimensions
SO-12	2×(1200×700) mm
SO-15	2×(1500×700) mm
SO-18	2×(1800×700) mm

#### 2a PO-O Additional self

Height adjustment: 200 - 850 mm

- Load capacity: 50 kg

#### 2b PO/2 Underneath shelf

Not compatible with optional TP-01/P drawer.

- Load capacity: 100 kg

#### 3 EP-O Power panels

Basic configuration consists of 2 aluminium cases each with 4 sockets with protective contacts and 3 m cables. Panels can be equipped with additional sockets, earth leakage circuit breakers, automatic fuses and phone jacks.

- Nominal load capacity: 10 A
- Grounding cord cross-section: 0.75 mm

#### 4 DL-O/A Workbench lighting

DL-O/A Workbench lightings are placed in aluminum cases, each with 2 energy-efficient luminescent 54 W lamps, light direction regulation and shadowless reflector. Quick switching on without shimmering, no strobing freeze.

- Length: 1200 mm
- Height adjustment: 500 - 1350 mm
- Illuminance at 1000 mm distance: 1200 lux central and 800 lux peripheral

#### 5 Double bin rail

Double aluminum rail for storage placed along workbench length.

- Load capacity: 10 kg

#### 6 Double perforated panel

The panel can be equipped by different holders for additional equipment and tools storage.

#### 7 IP Cantilever

It was designed for easy-to-reach attaching of drawings, lighting and instruments.

IP Cantilever can be additionally equipped by retracing KL-1200 mechanism.

#### 8 TP-01/P, TP-02/P Optional drawer units

Storage solution for tools and components, no place on floor required.

Dimensions:

- TP-01/P: 490x354x580 mm
- TP-02/P: 490x233x580 mm

**See also: Ordering information.**

**When ordering, please, mention whether ESD or technical version, and whether dark grey RAL 7012 or light grey RAL 7035 color required.**

**Individual requirements and customized layouts are welcomed.**







# TECHNICAL & ESD FURNITURE

## ANTISTATIC EQUIPMENT

### Ordering information

No.	Code	Dimensions (mm)	NB	Compatibility						
				CLASSIC	COMFORT	CONSTANT	OSTROV	ALLIANCE	ALPHA	
Workbench										
1	SR-12	1200x700 mm		•						
	SR-15	1500x700 mm		•						
	SR-18	1800x700 mm		•						
	SR-12-9	1200x900 mm		•						
	SR-15-9	1500x900 mm		•						
	SR-18-9	1800x900 mm		•						
	SR-12 Comfort	1200x700 mm			•					
	SR-15 Comfort	1500x700 mm			•					
	SR-18 Comfort	1800x700 mm			•					
	SR-12 Constant	1200x700 mm				•				
	SR-15 Constant	1500x700 mm				•				
	SR-18 Constant	1800x700 mm				•				
	SR-12 + drawer / SR-12 + cabinet					•				
	SR-15 + cabinet / SR-15 + drawer / SR-15 + drawer + drawer / SR-15 + drawer + cabinet / SR-15 + cabinet + cabinet					•				
	SR-18 + cabinet / SR-18 + drawer / SR-18 + drawer + drawer / SR-18 + drawer+ cabinet / SR-18 + cabinet + cabinet					•				
	SO-12	2x(1200x700mm)	PO Main shelf included				•			
	SO-15	2x(1500x700mm)					•			
	SO-18	2x(1800x700mm)					•			
	SU-12-5	1200x500 mm								
	SU-12-7	1200x700 mm								
	SU-15-5	1500x500 mm								
	SU-15-7	1500x700 mm								
	SU-18-5	1800x500 mm								
	SU-18-7	1800x700 mm								
	AL-12, AL/D-12	1200x700 mm	Supplied in a set with perforated panel, main shelf and lighting					•		
	AL-15, AL/D-15	1500x700 mm						•		
	AL-18, AL/D-18	1800x700 mm						•		
	ALF-15	1500x700 mm							•	
	ALF-18	1800x700 mm							•	
	ALF-O-15	2x(1500x700mm)							•	
	ALF-O-18	2x(1800x700mm)							•	
PO Main shelf										
2	PO-12-3	1200x300 mm	Rear racks included	•	•	•				
	PO-12-4	1200x400 mm		•	•	•				
	PO-15-3	1500x300 mm		•	•	•				
	PO-15-4	1500x400 mm		•	•	•				
	PO-18-3	1800x300 mm		•	•	•				
	PO-18-4	1800x400 mm		•	•	•				
PO/1 Additional shelf										
2a	PO-12/1-3	1200x300 mm	Either PO Main shelf or Rear racks required	•		•				
	PO-12/1-4	1200x400 mm		•		•				
	PO-15/1-3	1500x300 mm		•		•				
	PO-15/1-4	1500x400 mm		•		•				
	PO-18/1-3	1800x300 mm		•		•				
	PO-18/1-4	1800x400 mm		•		•				
	PO-O-12/1-3	2x(1200x300mm)					•			
	PO-O-15/1-3	2x(1500x300mm)					•			
	PO-O-18/1-3	2x(1800x300mm)					•			
	AL-PO-12/1-3	1200x300 mm						•		
	AL-PO-15/1-3	1500x300 mm						•		
	AL-PO-18/1-3	1800x300 mm						•		
	AL-PO-12/1-4	1200x300 mm					•			
	AL-PO-15/1-4	1500x300 mm					•			
	AL-PO-18/1-4	1800x300 mm					•			
PO/2 Underneath shelf										
2b	PO-12/2-3	1200x300 mm		•			•			
	PO-12/2-4	1200x400 mm		•			•			
	PO-15/2-3	1500x300 mm		•			•			
	PO-15/2-4	1500x400 mm		•			•			

www.viking-esd.com

# TECHNICAL&ESD FURNITURE

## ANTISTATIC EQUIPMENT



### Ordering information

No.	Code	Dimensions (mm)	NB	Compatibility					
				CLASSIC	COMFORT	CONSTANT	OSTROV	ALLIANCE	ALPHA
	PO-18/2-3	1800x300 mm		•			•		
	PO-18/2-4	1800x400 mm		•			•		
EP Power panel									
3	EP-12		For all series except Alliance, either PO Main shelf or Rear racks required	•	•	•		•	
	EP-15			•	•	•		•	
	EP-18			•	•	•		•	
	EP-O-12		Either PO Main shelf or Rear racks required				•		
	EP-O-15						•		
	EP-O-18						•		
	AL-EP-12							•	
	AL-EP-15							•	
	AL-EP-18							•	
	ALF-EP-15								•
	ALF-EP-18								•
EP Power panel									
3a	½ EP-12		SRST 12/15/18 required Either PO Main shelf or Rear racks required	•	•	•			
	½ EP-15			•	•	•			
	½ EP-18			•	•	•			
DL Workbench lighting									
4	DL-12/A		Either PO Main shelf or Rear racks required	•		•			
	DL-15/A			•		•			
	DL-18/A			•		•			
	DL-12/A Comfort				•				
	DL-15/A Comfort				•				
	DL-18/A Comfort				•				
	DL-O-12						•		
	DL-O-15						•		
	DL-O-18						•		
RK Bin rail									
5	RK-12		For all series except Alliance, either PO Main shelf or Rear racks required	•	•	•		•	
	RK-15			•	•	•		•	
	RK-18			•	•	•		•	
	RK-O-12		Either PO Main shelf or Rear racks required				•		
	RK-O-15						•		
	RK-O-18						•		
	AL-RK-12							•	
	AL-RK-15							•	
	AL-RK-18							•	
5a	½ RK-12		SRST 12/15/18 required Either PO Main shelf or Rear racks required	•	•	•			
	½ RK-15			•	•	•			
	½ RK-18			•	•	•			
PFP Perforated panel									
6	PFP-12	1200x325 mm	Either PO Main shelf or Rear racks required	•	•	•			
	PFP-15	1500x325 mm		•	•	•			
	PFP-18	1800x325 mm		•	•	•			
	PFP-O-12	1200x325 mm					•		
	PFP-O-15	1500x325 mm					•		
	PFP-O-18	1800x325 mm					•		
6a	½ PFP-12	560x500 mm	SRST 12/15/18 required Either PO Main shelf or Rear racks required	•	•	•			
	½ PFP-15	710x500 mm		•	•	•			
	½ PFP-18	860x500 mm		•	•	•			
PN Sloped shelf									
7	PN-12	534 mm	SRST 12/15/18 required Either PO Main shelf or Rear racks required	•	•	•			
	PN-15	684 mm		•	•	•			
	PN-18	834 mm		•	•	•			
IP Cantilever with tool hanger									
8	IP-12		DL: Workbench lighting required	•	•	•	•		
	IP-15			•	•	•	•		
	IP-18			•	•	•	•		
US Corner workbench									
9	US-1	1200x500 mm		•					
	US-1 Comfort	1200x500 mm			•				
Suspended drawer unit									
10	TP-01/P	350x490x580mm		•	•		•	•	•
	TP-02/P	350x230x580mm		•	•		•	•	•

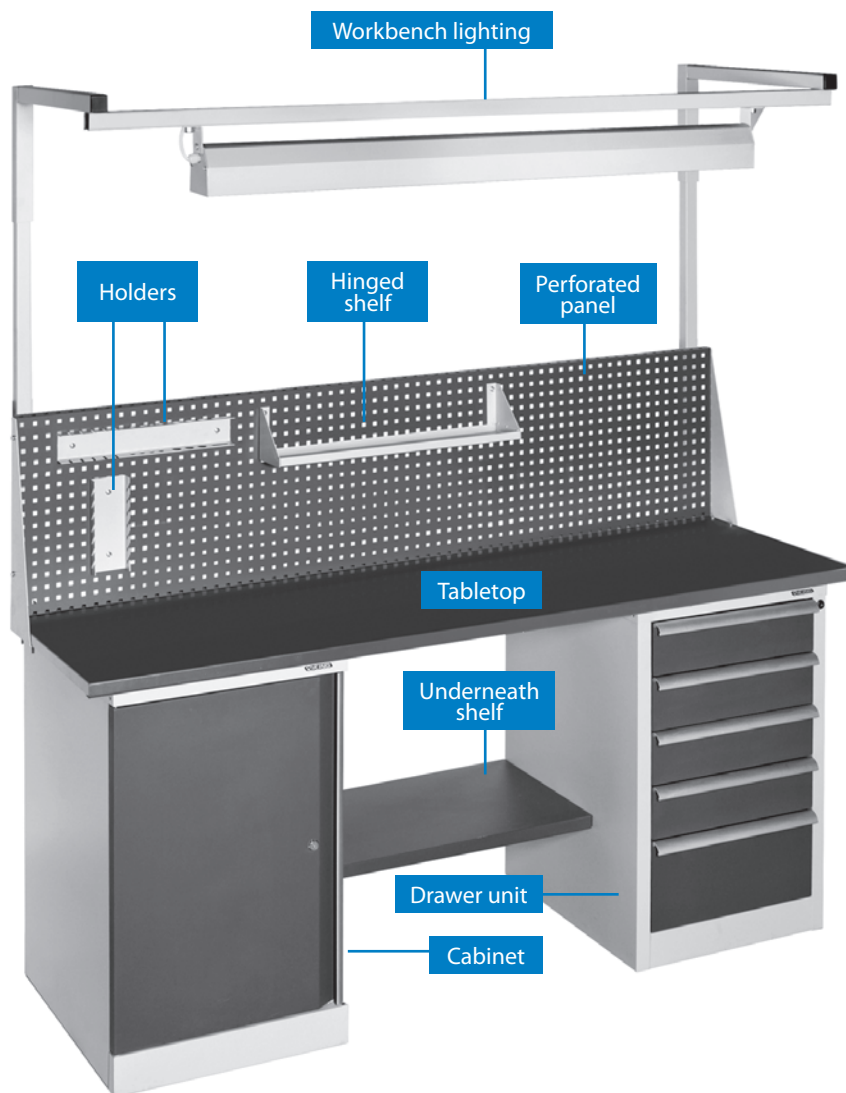
www.viking-esd.com



# TECHNICAL & ESD FURNITURE ANTISTATIC EQUIPMENT

## VERSTAK series heavy duty workbenches

www.viking-esd.com



Type 1



Type 2



Type 3



Type 4

VERSTAK series offer module workbenches of heightened rigidity and durability with distributed load capacity of over 500 kg. These workbenches offered only in technical /non-antistatic version. Maximum functionality is achieved by a range of tabletops, supports and additional equipment. Standard width is 630 mm and height – 800 mm plus tabletop's thickness.

### There are 4 types of tabletops

Type 1	21 mm thick plywood with light grey plastic edges.
Type 2	21 mm thick plywood covered by 2 mm dark grey metal sheet, the latter is bent over edges.
Type 3	21 mm thick plywood with light grey plastic edges covered by 6 mm dark grey metal sheet.
Type 4	6 mm thick dark grey metal sheet.



### VERSTAK series heavy duty workbenches

#### There are 3 standard types of supports

- Cabinet unit with 5 drawers on telescopic runners and a lock **D**
- Cabinet unit with 2 removable shelves and a lock **T**
- Legs

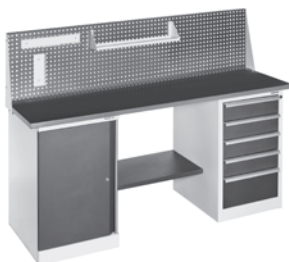
These supports can be combined, but 1200 mm length workbenches must have legs as one support.

New stationary cabinet (TMB-02) and drawer unit (DR-03/1) can be installed as a worktop support upon request (see more on p. 23) VERSTAK workbenches can be additionally equipped by PRV. Perforated panel with 2 tool hangers and a rack and DLV. Workbench lighting with two 54 W luminescent lamps.



**T**

**D**



**PRV**



**DLV**

### Ordering information



**VR: Verstak with a drawer unit**

**VR-12D/Nº** 1200x630 mm

**VR-15D/Nº** 1500x630 mm

**VR-18D/Nº** 1800x630 mm



**VR: Verstak with a cabinet**

**VR-12T/Nº** 1200x630 mm

**VR-15T/Nº** 1500x630 mm

**VR-18T/Nº** 1800x630 mm



**VR: Verstak with different combinations of cabinet and drawer units**

**VR-15DT/Nº** 1500x630 mm

**VR-15DD/Nº** 1500x630 mm

**VR-15TT/Nº** 1500x630 mm

**VR-18DT/Nº** 1800x630 mm

**VR-18DD/Nº** 1800x630 mm

**VR-18TT/Nº** 1800x630 mm

**Note:** Nº in the table code corresponds to tabletop type (1, 2, 3 or 4).

**PRV: Perforated panel (small shelf and 2 holders included)**

**PRV-12** 1200x430 mm

**PRV-15** 1500x430 mm

**PRV-18** 1800x430 mm

**DLV: Workbench lighting**

**DLV-12** for 1200 mm width workbenches

**DLV-15** for 1500 mm width workbenches

**DLV-18** for 1800 mm width workbenches



# TECHNICAL & ESD FURNITURE

## ANTISTATIC EQUIPMENT

Always in stock

www.viking-esd.com



### Classic workstation set

Classic workstation set includes Workbench (SR), Main shelf (PO) and Workbench lighting (DL/A). Classic workstation set can be supplemented by additional equipment at any time after the purchase. Worktop and shelf are designed to endure big loads. CLASSIC workstation sets are simple, functional and inexpensive. They can be placed in a line with no gaps for conveyor work.

Universal design allows outfitting the workplace with necessary equipment and drawer units. Powder coated steel frame and abrasion-resistant tabletop.

Load capacity 300 kg.

Height adjustment 650 - 950 mm.



### VKG C-100 ESD

ESD laboratory chair, covered with static dissipative fabric, five conductive glides. Can be additionally equipped with: ESD casters, ESD armrests, footrest and enlarged gaslift.

- Back and seat angles adjustments
- Seat height adjustment: 43 - 57 cm
- Resistance: less than 1 MOhm
- Weight: 7 kg
- Available colors: grey and blue



### SU Universal workbench

#### 1 SU Universal workbench

The simplest workbench in our product range. UNIVERSAL workbenches do not allow any extension, but can be placed in a line with no gaps.

SU-12-5	1200 x 500 mm
SU-12-7	1200 x 700 mm
SU-15-5	1500 x 500 mm
SU-15-7	1500 x 700 mm
SU-18-5	1800 x 500 mm
SU-18-7	1800 x 700 mm



When ordering, please, mention whether ESD or technical version, and whether dark grey RAL 7012 or light grey RAL 7035 color required.

### Customized layouts

We are pleased to offer customized layouts based on our clients' individual requirements and projects. One can change size, shapes, add necessary elements to any particular module.



ESD cells wardrobe with prominent edges which provides the possibility of convenient cells relocation and use



Customized shape workbench with additional multilevel shelves



Odd-shaped table that is used as a connection part between two Classic series workbenches located at right angles to make a continuous working area



Movable computer table with keyboard support



Workbench with long adjustable sloped shelf and a worktop round cut

### Workplaces additional equipment

#### PO-IP-12/15/18 Tabletop secondary structure



Tabletop secondary structure is equipped with additional power panel, the possibility of extension is provided: basic version includes four sockets and a switch, 2 sockets can be added for 1200 mm length item, 8 sockets can be added for 1500 mm length item and 13 sockets can be added for 1800 mm length item. Power panel can also be equipped with RCD and internet socket.

- Load capacity: 120 kg
- Dimensions: 1200/1500/1800x400x65 mm

#### EP Power Panel accessories



- single socket with grounding
- double socket with grounding
- 10 A automatic fuse
- 16 A automatic fuse
- circuit breaker (F362-25/2/0.03-A)
- circuit breaker (F362-16/2/0.01-A)
- automatic circuit breaker with power line disturbances suppression.

#### PPK-01 Keyboard support



Telescoping support saves space on the tabletop.

#### PPM-02 Monitor support



Adjusting support helps to save space on the tabletop. Requires PO Main shelf or Rear racks.



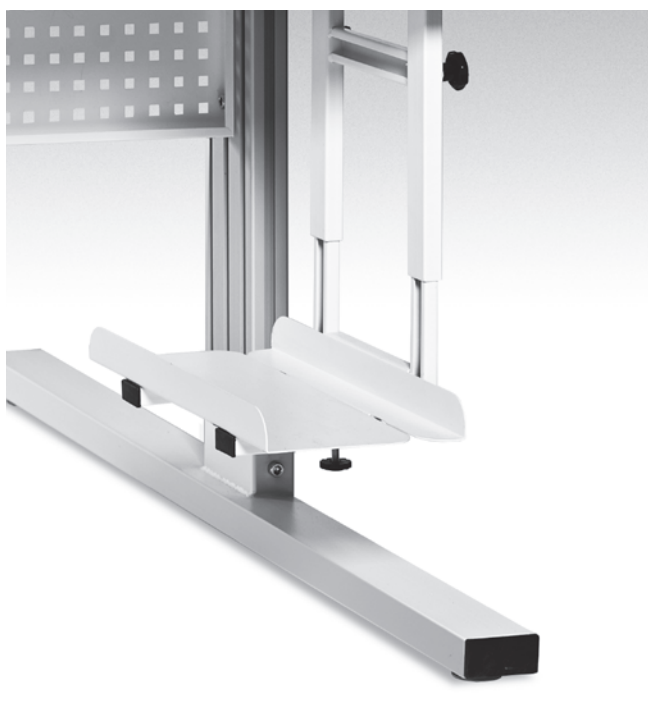
### Workplaces additional equipment

#### PPS-01 Movable computer case support



220x150x480 mm support helps to move the computer case around the area.

#### PPS-03 Suspended computer case support



Dimensions 265x460x460 mm. Suitable for any VIKING workbench.

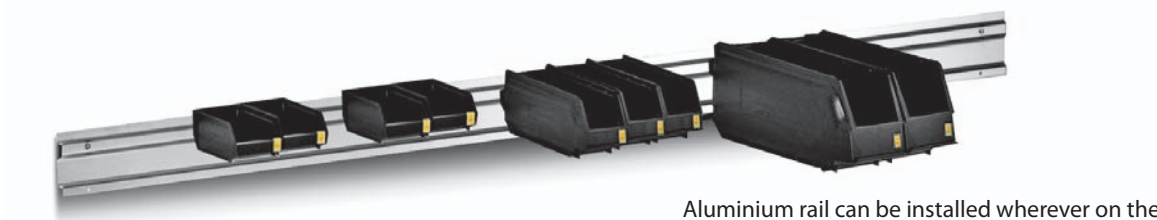


# TECHNICAL & ESD FURNITURE

## ANTISTATIC EQUIPMENT

### Workplaces additional equipment

#### ARK Bin rail



Aluminium rail can be installed wherever on the wall to provide storage bins attaching.

#### KL-1200 Retracing mechanism



Designed to suspend instruments and make them easy-to-reach. Cable tension depends on the weight of the instrument which is limited by 1.2 kg.

#### LBP-01 Side lamp



Consists of an aluminum case with 2 energy-efficient luminescent 24W lamps, light direction regulation and shadowless reflector. Quick switching on without shimmering, no strobing freeze. Requires PO Main self or Rear racks.

#### PPT-01 Movable drawer unit support



Movable drawer unit support is an additional unit that helps to turn stationary drawer units and cabinets into movable ones. It matches all standard cabinets (TMB-01 and TMB-02) and drawer units (DR-03, DR-05, DR-07 and DR-10/1).

Four 50 mm casters, 2 of which are with brakes.

Dimensions: 510 x 600 x 10 mm

Load capacity: 350 kg



### Workplaces additional equipment

#### VKG A-3146 Grounding unit



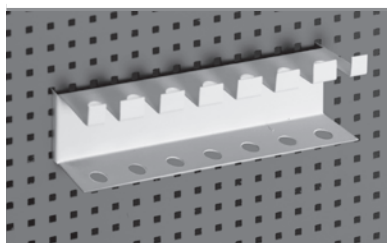
Two 10 mm buttons ground table mats, wrist straps and devices via junction block.

#### VKG G-01 Universal grounding unit

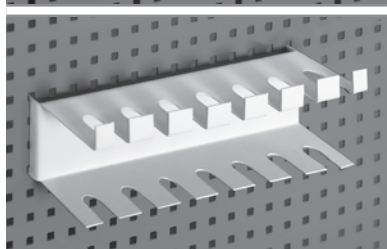


Two 10 mm buttons ground table mats, wrist straps and devices via junction block.

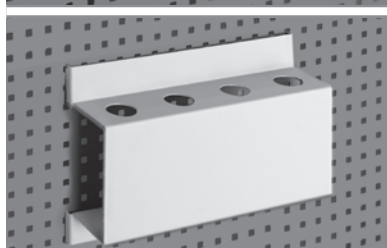
#### PFP Perforated Panel accessories



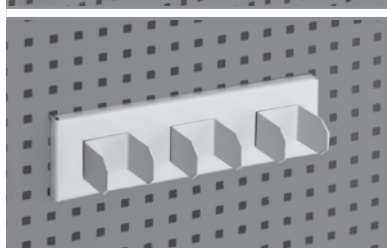
**K-01.** Hook for tweezers and equipment with small handles.  
Dimensions:  
182x47x35 mm.



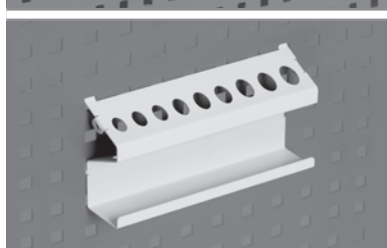
**K-02.** Hook for screwdrivers.  
Dimensions:  
182x47x35 mm.



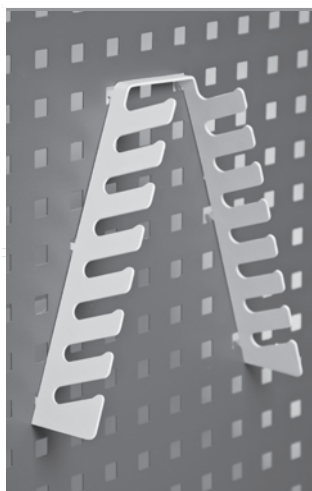
**K-03.** Holder for pliers.  
Dimensions:  
182x130x45 mm



**K-04.** Hook for tools.  
Dimensions:  
182x45x23 mm



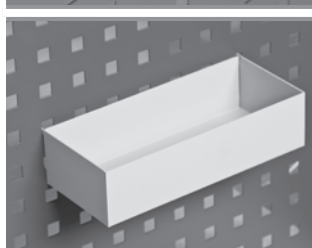
**K-05.** Holder for screwdrivers and 9-13 mm diameter drills.  
Dimensions:  
180x100x30 mm



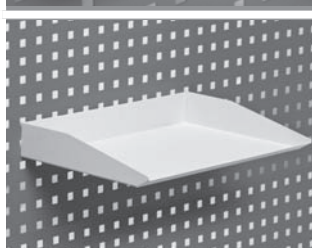
**K-06.** Hooks for spanners.  
Dimensions: 150x190x45 mm



**K-07.** Double hook for heavy instruments.  
Dimensions: 35x40x80 mm



**K-08.** Tray for small components and bottles.  
Dimensions: 180x45x80 mm



**K-09.** Tray for A4-size papers.  
Dimensions: 310x45x220 mm

### Drawer units – suspended and movable drawer units



Steel frame drawer units are designed for tools and components storage.

Movable and stationary drawer units can be also used as additional workplaces.

Steel frame drawer units equipped with central lock and either 550 mm telescoping drawers or shelves. Movable units have 4 rubber casters, 2 of which are with brakes.

Drawers' inner dimensions for different types are

**Type A** 400x45x 505 mm

**Type B** 400x100x505 mm

**Type C** 400x160x505 mm

Load capacity per drawer 30 kg

		Suspended		Movable	
		TP-01/P	TP-02/P	TP-01/S	TP-02
Picture number		<b>1</b>	<b>2</b>	<b>3</b>	<b>4</b>
Dimensions (mm)		490x354x580 mm	490x233x580 mm	490x580x580 mm	490x650x580 mm
Quantity of drawers		3	2	3	4
Drawers per unit	<b>Type A</b>	1	1	–	1
	<b>Type B</b>	2	1	2	2
	<b>Type C</b>	–	–	1	1
Weight (kg)		20	15	25	32

When ordering, please, mention whether ESD or technical version and dark grey RAL 7012 or light grey RAL 7035 color required.



### Stationary cabinets and drawer units



Steel frame stationary cabinets and drawer units are designed for tools and components storage and can be also used as additional workplaces.

All stationary cabinets and drawer units can be installed as work-top supports for Constant series workbenches and Verstak series heavy duty workbenches.

		TMB-01	TMB-02	DR-03/1	DR-05/1
Picture number		5	6	7	8
Dimensions (mm)		500x800x590 mm	500x800x590 mm	500x800x590 mm	500x800x590 mm
Quantity of drawers		2 shelves	1	3	5
Drawers per unit	Type B	–	1	–	4
	Type C	–	–	3	1
Weight (kg)		25	30	35	40



# TECHNICAL & ESD FURNITURE

## ANTISTATIC EQUIPMENT

### Enlarged drawer units

### Additional equipment for drawers – Drawer dividers sets



Steel frame enlarged stationary drawer units are designed for tools and components storage; can be also used as additional workplaces.

		DR-07/1	DR-10/1
Picture number		1	2
Dimensions (mm)		500×1040×590 mm	500×1520×590 mm
Quantity of drawers		7	10
Drawers types per unit	A	2	1
	B	2	5
	C	3	4
Weight (kg)		55	75

Dividers help to organize drawer internal space according to specific needs

One can modify the space to many cells according to the number and dimensions of items needed to store: instruments, PCBs, mounting elements or other items.

#### 1 D-10/A

Dividers for type A drawers (400x45x505 mm). The set consists of 4 longitudinal and 6 transversal dividers. Up to 35 different sized cells can be organized.

#### 2 D-11/B

Dividers for type B drawers (400x100x505 mm). The set consists of 3 longitudinal and 4 big and 4 small profiled transversal dividers. Up to 10 different sized cells can be organized.

#### 3 D-16/B

Dividers for type B drawers (400x100x505 mm). The set consists of 4 longitudinal and 6 medium and 6 small profiled transversal dividers. Up to 15 different sized cells can be organized.

### ALF-TMB cabinet

### Additional equipment for ALF-TMB cabinet: shelves dividers



Spacious metal cabinet for documents, folders and personal belongings; can be attached to workbench by bolts. Inner section equipped with casters and slides in and out for 650 mm. Cabinet's inner section has 3 shelves; each has a perforated side wall, which can be placed on right or left side depending on further usage.

- Dimensions: 1285 x 445 x 700 mm
- Distributed load capacity of each shelf: 30 kg

#### 1 D-7/ALF Horizontal dividers

7 horizontal 335 mm length dividers help to organize cells for different small items.

#### 2 D-4/ALF Vertical dividers

4 vertical 240 x 290 mm dividers help to organize slots for folders and documents.

### Movable tables and carts



#### 1 PS-07 Comfort

#### 2 3 4 PS-07, PS-10, PS-15 movable tables

Movable tables are used for tools and components storage and transportation.  
All movable tables are equipped with four 75 mm casters, 2 of which are with brakes.  
Height adjustment: 650 - 950 mm.

	PS-07 Comfort	PS-07	PS-10	PS-15
Picture number	1	2	3	4
Load capacity per surface (kg)	100	150		
Dimensions (mm)	710x515		700x1000	700x1500

#### 5 AL-PS Alliance Movable table

Movable table is used for tools and components storage and transportation.  
Equipped with four 75 mm casters, 2 of which are with brakes.

- 3 shelves with heights adjustment
- Dimensions: 690 x 460 x 840 mm
- Load capacity: 150 kg

**When ordering, please, mention whether ESD or technical version and dark grey RAL 7012 or light grey RAL 7035 color required.**



### Movable tables and carts



#### 6 7 8 TT-02, TT-03, TT-04 transportation carts

Transportation carts are used for tools and components storage and transportation. Metal carts are equipped with four 75 mm (for TT-02, TT-03 carts) or 125 mm (for TT-04 cart) casters, 2 of which are with brakes, and height adjustable shelves.

	TT-02	TT-03	TT-04
Picture number	6	7	8
Dimensions (mm)	470×990×840 mm	470×990×840 mm	615×1560×1270 mm
Quantity of shelves	2	3	4
Shelves height adjustment	140...800 mm	140...800 mm	190...1480 mm
Load capacity (kg)	100	100	150

When ordering, please, mention whether ESD or technical version and dark grey RAL 7012 or light grey RAL 7035 color required.

### Movable trolleys



#### 1 ST-05 Movable trolley

Movable trolleys are used for tools and components storage and transportation

- 5 height-adjustable shelves and power panel with 5 grounded and 1 ungrounded sockets
- Lateral position of power panel
- 2 of 4 casters are with brakes
- Total load capacity: 150 kg

	ST-05	ST-05 Comfort
Dimensions (mm)	500x600x1600	460x680x1600

#### 2 ST-05 Comfort Movable trolley

#### 3 ST-06 Movable trolley

Movable trolley is used for tools and components storage and transportation.

- 5 height-adjustable shelves
- 2 of 4 casters are with brakes.
- Dimensions: 500 x 600 x 1605 mm
- Total load capacity: 150 kg

#### 4 Equipment trolley AL-ST

Equipment trolley is designed for additional equipment storage and transportation. It has 5 height adjustable shelves and a power panel with 4 sockets. The panel is located on the side frame thus does not occupy any space on shelves.

Equipment trolley side frames are manufactured of aluminum profile, which allows attaching small elements, and gives the whole unit elegant look. Trolley has 4 casters, 2 of which are with brakes as supports.

- Dimensions: 690 x 460 x 1940 mm.
- Load capacity: 150 kg

**When ordering, please, mention whether ESD or technical version, and whether dark grey RAL 7012 or light grey RAL 7035 color required.**

### Movable trolleys



#### 5 SKM Dual movable trolley

Dual Movable trolley for accessories is made of a rack coated with conductive powder paint, thus available only in ESD version. Lower shelf made of ESD laminated chipboard 25 mm thick. Trolley is equipped with four 75 mm casters (2 of them with brakes) and six rails for boxes. Attachable bins are ordered separately.

- Load capacity: 100 kg
- Dimensions: 1600 x 680 x 460 mm

#### 6 ST-R Movable repairing trolley

The trolley has 3 sliding perforated surfaces and a drawer unit with 5 telescoping drawers.

Dimensions:

- Trolley: 600 x 630 x 1730 mm
- Drawer unit: 500 x 800 x 590 mm
- Front perforated panel: 525 x 600 mm
- Rear perforated panels: 550 x 570 mm

Load capacities:

- Front perforated panel: 10 kg
- Rear perforated panels: 5 kg

#### 7 ST-PI Movable equipment trolley

The trolley has two 400 x 100 x 505 mm drawers and four 480 x 480 surfaces, upper of which is angle adjustable.

- Dimensions: 570 x 610 x 1490 mm
- Load capacity per drawer/shelf: 10 kg

#### 8 SUS Movable packing trolley

Auxiliary trolley, designed for convenient polyethylene, damping film, paper and other packaging materials rolls clamping; maximum roll's width – 1.5 m. Movable packing trolley equipped with four 50 mm casters, all with brakes.

Dimensions: 600 x 1240 x 1800 mm

**When ordering, please, mention whether ESD or technical version, and whether dark grey RAL 7012 or light grey RAL 7035 color required.**



# TECHNICAL & ESD FURNITURE

## ANTISTATIC EQUIPMENT

### Cabinets and wardrobes

www.viking-esd.com



Central lock with 2000 combinations.  
3 or 4 height adjustable shelves with 50 mm pitches.  
For wardrobe and combined cabinets garment bar included.  
For SHKH cabinets 16 (SHKH-2) to 30 (SHKH-1) 360 mm telescoping drawers included.  
Drawers dimensions 310x100x370 mm.  
Load capacity per surface – 30 kg

Picture number		Dimensions (mm)	Weight (kg)
SHD-1, SHD-2 Filing cabinets			
1a	SHD-1	1950x1000x550	80
	SHD-2	1850x820x450	62
1b	SHD-3	1000x820x450	40
SHO-1, SHO-2 Wardrobe cabinets			
2	SHO-1	1950x1000x550	68
	SHO-2	1850x820x450	52

When ordering, please, mention whether ESD or technical version, and whether dark grey RAL 7012 or light grey RAL 7035 color required.



### Cabinets and wardrobes



4

5

Picture number		Dimensions (mm)	Weight (kg)
<b>SHK-1, SHK-2 Combined cabinets</b>			
3	SHK-1	1950x1000x550	78
	SHK-2	1850x820x450	58
<b>SHKH-1, SHKH-2 Drawers cabinets</b>			
4	SHKH-1	1850x820x450	127
	SHKH-2	1060x820x450	69

**Additional equipment for SHKH cabinet:  
shelves dividers**

#### 5 D-6/Sh

Dividers for type SHKH drawers (360x100x310 mm).  
The set consists of 2 longitudinal and 4 transversal dividers.  
Up to 15 different sized cells can be organized.

When ordering, please, mention whether ESD or technical version, and whether dark grey RAL 7012 or light grey RAL 7035 color required.

### Shelvings



#### STU Shelvings

Shelvings are used for documents and components storage. Shelvings (except for the STU-01) have height-adjustable supports and 5 height adjustable shelves with 50 mm pitches. For STU-01 there are 6 height adjustable shelves with 50 mm pitches. Load capacity per shelf – 30 kg. Load capacity total – 180 kg for STU-01, 110 kg – for STU-02, STU-03, STU-04, STU-05.

Picture number		Dimensions (mm)
1	STU-01	1850x820x430
2	STU-02	1850x820x430
	STU-03	1850x1000x530
	STU-04	1950x820x430
	STU-05	1950x1000x530

#### STS Reinforced shelvings

Height-adjustable supports. 4 height adjustable shelves with 50 mm pitches. No additional floor leveling required. Load capacity per shelf – 200 kg. Load capacity total – 640 kg.

Picture number		Dimensions (mm)
3	STS-12	1800 x 1200 x 600
	STS-15	1800 x 1500 x 600

#### PL-1, PL-2, PL-ST-12, PL-ST-15 Additional shelves

Additional shelves for cabinets and shelvings

<b>PL-1</b>	SHD-1, STU-03, STU-05
<b>PL-2</b>	SHD-2, SHD-3, STU-01, STU-02, STU-04
<b>PO-ST-12</b>	STS-12
<b>PO-ST-15</b>	STS-15

When ordering, please, mention whether ESD or technical version, and whether dark grey RAL 7012 or light grey RAL 7035 color required.

### ESD chairs

#### VKG C-100 ESD



ESD laboratory chair, covered with static dissipative fabric, five conductive glides.

Can be additionally equipped with: ESD casters, ESD armrests, footrest and enlarged gaslift.

- Back and seat angles adjustments
- Seat height adjustment: 43 - 57 cm
- Resistance: less than 1 MOhm
- Weight: 7 kg
- Available colors: grey and blue

#### VKG C-200 ESD



ESD laboratory chair, covered with static dissipative fabric, five conductive glides.

Can be additionally equipped with: ESD casters, ESD armrests, footrest and enlarged gaslift.

- Back and seat angles adjustments
- Seat height adjustment: 43 - 57 cm
- Resistance: less than 1 MOhm
- Weight: 7,5 kg
- Available colors: grey and blue

#### VKG C-300 ESD



ESD laboratory chair with five conductive glides, conductive incombustible polyurethane upholstery. Can be additionally equipped with: ESD casters, ESD armrests, footrest and enlarged gaslift.

- Back and seat angles adjustments
  - Seat height adjustment: 43 - 57 cm
  - Resistance: less than 1 MOhm
  - Weight: 7,5 kg
- Cleanroom – suitable.

#### VKG C-400 ESD



ESD laboratory stool with five conductive glides, conductive incombustible polyurethane upholstery. Can be additionally equipped with: ESD casters, ESD armrests, footrest and enlarged gaslift.

- Seat height adjustment: 43 - 63 cm
  - Resistance: less than 1 MOhm
  - Weight: 4 kg
- Cleanroom – suitable.



# TECHNICAL & ESD FURNITURE

## ANTISTATIC EQUIPMENT

### ESD chairs

#### KT ESD armrests



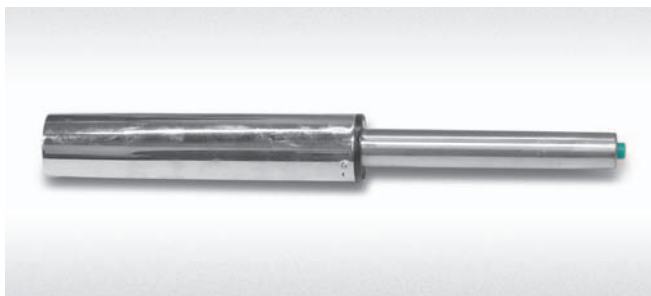
A set of ESD armrests can be additionally ordered for all types of ESD chairs.

#### P607A ESD casters



A set of ESD casters can be additionally ordered for all types of ESD chairs and ESD stool.

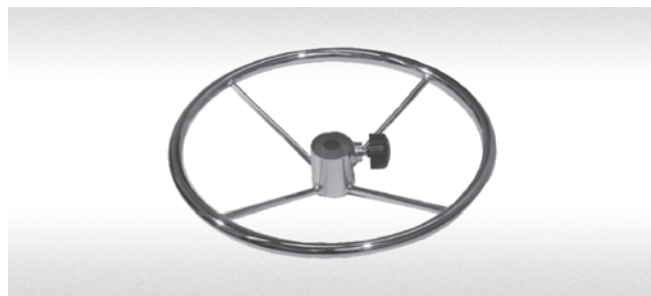
#### Gaslifts



ESD chairs and armchairs originally equipped by KJ/140 gaslift, which allows to adjust seat height 43-57 cm from the floor. ESD stool C400 originally equipped by KJ/200 gaslift. Separately KJ/200 and KJ/260 Gaslifts can be ordered.

Caster type	Seat height adjustment
KJ/140 (standard for C-100/200/300)	43 - 57 cm
KJ/200 (standard for C-400)	43 - 63 cm
KJ/260	54 - 83 cm

#### Foot ring (support)



Height-adjustable supportive foot ring. Recommended for chairs with extended gaslifts.

Ring type	Ring diameter
JR-430	43 cm
JR-600	60 cm



## Test and measurement equipment



### 1 VKG A-750 Wrist straps and footwear tester

VKG A-750 is used for wrist straps and footwear antistatic testing on a daily basis. A person steps on a metal plate and attaches wrist strap's grounding cord to a connector. By pressing a metal button on a tester the person checks straps and footwear resistance functionality. Should resistances be within IEC 61340 acceptable range, a green indicator switches on; otherwise – a red one.

- Test voltage: 24 V
- Measurement range:
  - 750 kOhm – 10 MOhm (wrist strap)
  - 750 kOhm – 35 MOhm (footwear)

### 2 VKG A-755 Calibrator for VKG A-750

VKG A-755 calibrator is used for periodic (on a quarterly basis and after batteries change) verification of VKG A-750 testers. The device is designed for quick and easy determination whether a tester is operable. Complies with IEC 61340 standards.

### 3 VKG A-770 Temperature, humidity and surface resistance universal tester

VKG A-770 combines 3 measuring devices: thermometer, hygrometer and ohmmeter. For point to point and point to ground resistance 2 measuring electrodes and 2 m cords are used. The device is capable of recording 100 results in an energy-independent memory. They can be viewed either on a display or transferred by USB on a monitor.

Power supply can be provided by accumulators or by mains adapter; in the latter case, accumulators are automatically being recharged.

- Test voltage: 10 V, 100 V
- Measuring range at 10 V: 1 kOhm – 1 MOhm
- Measuring range at 100 V: 1 MOhm – 999 GOhm
- Relative humidity measuring range: 0 – 98%
- Temperature measuring range: 0...+70 °C and – 40...+ 123 °C (with remote adapter)
- Accuracy in ranges: 2.5% with less than 10 GOhm value, 5% up to 100 GOhm, 10% when more than 100 GOhm
- Relative humidity measurement accuracy: ±3%
- Temperature measurement accuracy: ±0.5 °C
- Dimensions: 315x130x60 mm
- Weight: 700 g



# TECHNICAL & ESD FURNITURE ANTISTATIC EQUIPMENT

## ESD garments

ESD garments shield external objects from electrostatic discharge, which is generated on internal garments by friction. Your logo, text inscriptions and graphic elements can be applied to any garment we offer. When ordering, mention necessary height (152-194 mm) and size (EUR 34-54).

VA Unisex Shortcut lab coat



- Machine washable at 60 °C
- At least 50 washing cycles without losing ESD characteristics
- Charge decay time:  $\leq 0.17$  s
- Composition: 67% polyester, 30% cotton, 3% grounding fibers
- Colors: white, blue

VAE-M Men's lab coat,  
VAE-W Women's lab coat



- Machine washable at 60 °C
- At least 50 washing cycles without losing ESD characteristics
- Charge decay time:  $\leq 0.17$  s
- Composition: 65% polyester, 33% cotton, 2% grounding fibers



VH-01 Antistatic bandana

Material: 66% polyester, 33% cotton, 1% conductive fibers  
Colors: blue, white

www.viking-esd.com

### ESD garments

ESD garments shield external objects from electrostatic discharge, which is generated on internal garments by friction. Your logo, text inscriptions and graphic elements can be applied to any garment we offer. When ordering, mention necessary height (152-194 mm) and size (EUR 34-54).

VAK-M Men's costume,  
VAK-W Women's costume



- Machine washable at 60 °C
- At least 50 washing cycles without losing ESD characteristics
- Charge decay time:  $\leq 0.17$  s
- Composition: 66% polyester, 33% cotton, 1% grounding fibers
- Colors: white, blue, white and blue combined

VAT-W Women's trousers  
VAT-M men's trousers



- Machine washable at 60 °C
- At least 50 washing cycles without losing ESD characteristics
- Charge decay time:  $\leq 0.17$  s
- Composition: 66% polyester, 33% cotton, 1% grounding fibers
- Colors: white, blue

www.viking-esd.com



VH-02 Antistatic cap

Material: 66% polyester, 33% cotton, 1% conductive fibers; elastic band  
Colors: blue, white  
Sizes: 54-62





# TECHNICAL & ESD FURNITURE

## ANTISTATIC EQUIPMENT

### Our customers

www.viking-esd.com





### Our customers



[www.viking-esd.com](http://www.viking-esd.com)

# TECHNICAL & ESD FURNITURE ANTISTATIC EQUIPMENT

[www.viking-esd.com](http://www.viking-esd.com)



**VIKING VKG TOOLS**